

NEW ZEALAND ACCORDION ASSOCIATION

The New Zealand member of the Confédération Internationale des Accordéonistes - IMC-UNESCO



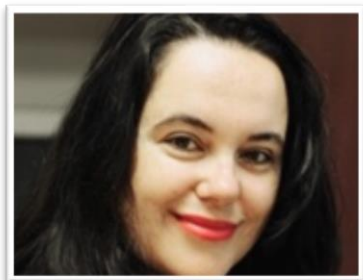
South Pacific International & New Zealand National Accordion Championships & Festival **2014 Prospectus**

\$500 FIRST PRIZE

Saturday 31st May & Sunday 1st June 2014

Venue: Raye Freedman Arts Centre
Epsom Girls Grammar School
Silver Road (off Gillies Ave)
Epsom
Auckland, New Zealand

COMPETITIONS ENTRIES CLOSING DATE 12th APRIL 2014



President's Welcome

I extend a warm invitation to the accordionists of New Zealand and other parts of the world to participate in the 2014 South Pacific International and New Zealand National Accordion Championships and Festival. Our association has staged this event since 1972. In addition to the comprehensive list of competitive classes, we also encourage festival participants both from New Zealand and internationally in solo, group, ensemble and orchestra format. We have enthusiastic and appreciative audiences who enjoy all genres of music.

We are delighted to once again have the use of the Raye Freedman Arts Centre. This outstanding venue is ideally suited to our requirements with excellent acoustics and facilities all under one roof. The weekend commences on Saturday morning with a full day programme. On Sunday afternoon, there will be a concert featuring winners of the South Pacific classes, festival items, and guest artists. We are very pleased to announce that this year we will have a special guest artist performing, Mirco Patarini from Italy. On Sunday evening a dinner featuring accordion entertainment will be held during which we will present trophies to the South Pacific Championship winners. This event is always popular and one not to be missed.

I look forward to seeing you all to enjoy a weekend of fun, friendship and great music.

Sonja Palinich
President
New Zealand Accordion Association

Your Committee

President:	Sonja Palinich	Vice-President:	Harley Jones
Secretary:	Heather Masefield	Treasurer:	Amber Masefield

Committee: Jessica Chen, Stephen Cope, Dennis Lovatt, Jenna Murray, Renee Jeffries, Tamba Young, George Xu

NZAA Competitions Secretary: Megan Jennings, 33 Realm Pl, Massey East, Auckland 0614
Phone +64 9 833 8346
Email: meganjennings@xtra.co.nz

NZAA Address: 4 O'Neill's Avenue, Takapuna, Auckland 0622
Phone: +64 9 489 8316 Fax: +64 9 486 3012
E-mail: nzaasecretary@yahoo.com

Contents

General Information	4
Official Rules	4
The Closing Date For Entries	4
Competition And Festival Prospectus Format	4
Entry Forms And Entry Fees.....	4
Intellectual Property	4
Membership Categories and Subscription Fees	5
Test Music	5
Own Choice Music	5
Official Programme and Timetable	5
Performance Category Descriptions	6
Solo Class Schedule	6
International Championship	6
New Zealand Championship	6
Standard.....	7
Qualified.....	7
Festival Performances.....	7
Solo Class Schedule	8
International Championship Solo Classes	8
New Zealand Championship Solo Classes	9
Coupe Mondiale Qualification for New Zealand Citizens	9
Accordion Solo Classes.....	9
Standard Solo Classes	11
Qualified Solo Classes.....	12
Duet Class Schedule	13
N.Z. Championship Duet Classes.....	13
Qualified Duet Classes	13
Trio/Ensemble Class Schedule	14
N.Z. Championship Trio/Ensemble Classes	14
Qualified Trio/Ensemble Classes.....	14
Orchestra Class Schedule	14
Regulations and Modus Operandi	15
Assessment Criteria	20
Marking.....	20
Calculation Of Results	21
Music Order Form	22

General Information

Official Rules

This Prospectus forms the official rules for the South Pacific International and New Zealand National Accordion Championships and Festival.

The Closing Date For Entries

To Reach The Competitions Secretary By: 12 April 2014

E-mail entries are accepted from entrants overseas, with payment by bank cheque or direct debit to reach the NZAA Competitions Secretary by the closing date.

Please Note:- Late entries are not accepted. NO EXCEPTIONS.

Competition And Festival Prospectus Format

The South Pacific International and New Zealand National Accordion Championships and Festival offer five performance categories:

- International Championship
- New Zealand Championship
- Standard
- Qualified
- Festival.

Each performance category includes a selection of classes. Details of the classes, the music requirements, time limits, test pieces where applicable, entry fees etc. are in the Class Schedule section.

Entry Forms And Entry Fees

For all International and New Zealand Championship Classes with a Test Piece requirement, only the official numbered entry forms can be used. These are supplied when you purchase your music from the NZAA Competitions Secretary.

Entry forms for all other classes are available from the NZAA Competitions Secretary and from teachers who wish to keep a supply of them. Additional copies of these may be photocopied.

Incorrectly completed Entry Forms will not be accepted.

Entry Fees are specified in the Class Schedule Section of this Prospectus.

Please note that each entrant must be a current financial member of the New Zealand Accordion Association Inc.

Intellectual Property

The NZAA retains the rights to, and the use of, all intellectual property from the competitions weekend.

Membership Categories and Subscription Fees

For the year beginning 1st April 2014

Membership	Fee
Ordinary Membership	\$25
Family Membership (The parents and children of one family living in the same dwelling)	\$50
Introductory Membership (First year of membership for those attending school)	\$15

Test Music

The International Championship Category and New Zealand Championship Category Test Music, is available from the NZAA Competitions Secretary from January until the entry closing date.

NOTE: Money must accompany all orders and no music will be issued without full payment. All music is sold as a package, which includes the official numbered entry form. The price includes postage and packing within New Zealand.

Test music must be purchased from the NZAA Competitions Secretary to ensure each competitor has the correct edition of the music including any changes (i.e. tempo, no repeats etc.) as prescribed by the NZAA Music Selection Committee.

The Test Music is available for viewing (by appointment only) from the NZAA Competitions Secretary, or the NZAA Secretary in Auckland, or AATA President Tania Lukic-Marx, 131 Caroola St, Canley Vale, Sydney, 2166 NSW Phone/Fax: +61 2 9727 6608 from mid January.

Own Choice Music

Each competitor is required to provide one copy of their Own Choice music for the adjudicators, (except for Improvisation Classes and Festival performances). This music is to be handed to the NZAA Official when reporting for your class.

Failure to supply music for the adjudicators will disqualify the contestant.

Official Programme and Timetable

The Programme for this event, including the timetable, will be mailed to all NZAA members approximately one week prior to the competitions. Overseas entrants will receive a Programme upon arrival in New Zealand.

Performance Category Descriptions

The South Pacific International and New Zealand National Accordion Championships and Festival offers five performance categories: International Championship, N.Z. Championship, Standard, Qualified and Festival.

Solo Class Schedule

International Championship

Entrants in these classes are not limited to New Zealand residents. By entering a class in the International Championship Category entrants compete for the honour of winning a South Pacific Championship title. Note: The Championship classes are based on age.

A competitor, who wins an age restricted International Championship Solo class, cannot enter that same class or any lower age International Championship class again excepting classes SP252 and SP258 which can be won twice consecutively, before the contestant must stand down for one year before re-competing in the same class.

All place getters of International Championship classes are presented with certificates and ribbons. Winners receive a trophy that must be returned to the NZAA Secretary no later than 21 days prior to the next year's competitions.

New Zealand Championship

Entrants in these classes must be New Zealand residents. By entering a class in the N.Z. Championship Category entrants compete for the honour of winning a New Zealand Championship title.

Each N.Z. Championship class with an age limit has a Test Piece which every competitor must perform. Some classes require an Own Choice piece to be performed in addition to the Test Piece. Some classes require one or more Own Choice piece/s be performed.

A competitor, who wins an age restricted N.Z. Championship Solo class, cannot enter that same class or any lower age N.Z. Championship Solo class again, with the exception of C11 and C12 classes which may be won twice.

All place getters of N.Z. Championship classes are presented with certificates and ribbons. Winners receive a trophy which must be returned to the NZAA Secretary no later than 21 days prior to the next year's competitions.

Standard

Entrants in these classes may be from any nation or territory. Classes in the Standard Category are regulated by both age and playing experience. This offers people who might have been learning for a short period of time, or have begun learning later in life, the opportunity to compete on a more equal basis. All music is Own Choice.

A contestant may not enter Standard and Championship Solo categories in the same year. A contestant may not enter a Standard Class if he/she has been placed first or second in a Championship solo class the previous year.

All place getters of Standard classes are presented with certificates and ribbons. Winners receive a trophy which must be returned to the NZAA Secretary no later than 21 days prior to the next year's competitions.

Qualified

Entrants in these classes may be from any nation or territory. Classes in the Qualified Category are based on actual age, as of 8th June of the contest year, or, on specific styles of music, or presentation. All music is Own Choice. The Qualified Category includes classes for different types of music, such as light classical, entertainment, ethnic, accordion with other instruments, accordion and vocal, etc. This offers competitors a suitable class in which to perform their favourite music and demonstrate the versatility of the accordion.

An Original Accordion Composition is a piece written specifically for the accordion, for example, by Frosini, Deiro, Mews, Daverne, etc.

Sight reading classes are held in a private room without an audience.

For Improvisation Classes, the performer is not required to provide written music for the adjudicators. This is to encourage the performance of individual arrangements and creativity. All place getters in these classes receive certificates and ribbons.

Festival Performances

Any soloist or group featuring accordion is invited to participate. This is an ideal opportunity for any hobbyist, accordion lover or professional to perform for an enthusiastic friendly audience. Festival performers may be from any nation or territory. This category is for non-competitive performances that are not adjudicated.

All applications welcomed. Please contact the NZAA Competitions Secretary early enough to complete application forms (entry \$10) and membership forms and have them reach the Competitions Secretary by the closing date. Please note that each performer must be a current financial member of the New Zealand Accordion Association Inc.

Solo Class Schedule

Entry Fee: \$50 South Pacific, \$20 Championship, \$10 Qualified, \$10 Standard, per class, unless specified below.

All times listed below are maximum playing times unless otherwise specified.
Please ensure that you have read all parts of this Prospectus relevant to your class, especially the "Regulations and Modus Operandi", before sending in your entry.

International Championship Solo Classes

New Zealand entrants in these classes are automatically entered in the equivalent New Zealand Solo Championship Class dependent upon their eligibility as set out on page 5 of this Prospectus. New Zealand entrants play only once and pay one entry fee for the two classes, even though that one performance may result in winning both the New Zealand and South Pacific Championship titles. In addition to the prize money listed below the winner of SP252 will receive a personalised web page on the Accordions Worldwide web site for 1 year from the competition date.

Class Number	Class Description, Age, Music Requirements	Entry Fee
SP250 C6	South Pacific Accordion Solo Championship 12 years and under, music requirements as per New Zealand Solo Championship Class C6	\$50
SP251 C9	South Pacific Accordion Solo Championship 15 years and under, music requirements as per New Zealand Solo Championship Class C9	\$50
SP257 C11	South Pacific Junior Virtuoso Entertainment Championship, 18 years and under, music requirements as per Round 1 of the "Junior Intl. Competition for Virtuoso Entertainment Music" Coupe Mondiale category at www.coupemondiale.org	\$50
SP259 C12	South Pacific Junior Solo Championship, 18 years and under, music requirements as per Round 1 of the "Junior Intl. Coupe Mondiale" category at www.coupemondiale.org	\$50
SP258 C15	South Pacific Virtuoso Entertainment Solo Championship, 32 years and under, music requirements as per the "Intl. Competition for Virtuoso Entertainment Music" Coupe Mondiale category at www.coupemondiale.org	\$50
SP252 C16	South Pacific Accordion Solo Championship, 32 years and under, music requirements as per the "Masters Coupe Mondiale" category at www.coupemondiale.org	\$50

Note: Failure to observe the minimum and maximum playing times will result in a penalty.

New Zealand Championship Solo Classes

Note: A contestant may not in the same year enter both a Championship solo class and a Standard solo class. Contestants in Classes C6, C9, C11, C12, C15, and C16 are automatically entered in the equivalent South Pacific Solo Championship Class dependent upon their eligibility as set out on page 5 of this Prospectus. New Zealand entrants play only once and pay one entry fee for the two classes, even though that one performance may result in winning both the New Zealand and South Pacific Championship titles.

Coupe Mondiale Qualification for New Zealand Citizens

New Zealand citizens wishing to enter any of the categories of the CIA Coupe Mondiale must first qualify and receive the endorsement of the New Zealand CIA member, the New Zealand Accordion Association Inc. Qualifiers may have their Coupe Mondiale entry fee subsidised by the NZAA. Prospective Coupe Mondiale candidates must enter the NZAA Competition of that same year in the (nearest) relevant category in order to qualify to represent New Zealand.

If a prospective NZ Coupe Mondiale candidate is unable to enter the NZAA Competition of that same year, audio-visual means may be used to ascertain if the candidate is of suitable standard to receive the endorsement of the NZAA. The application must be submitted to the Competitions Secretary before 1 June prior to the Coupe Mondiale of that same year. The fee will be the same as the entry fee for the equivalent NZAA South Pacific class for this procedure.

Accordion Solo Classes

Class Number	Class Description	Test Music	Music Price	Entry Fee
C1	7 and Under	Row, Row, Row Your Boat	\$10	\$20
C2	8 and Under	Goodbye, Old Paint	\$10	\$20
C3	9 and Under	Silver Star March	\$10	\$20
C4	10 and Under	Hot Foot Polka	\$10	\$20
C5	11 and Under	Kolmar Grand March	\$10	\$20
SP250	12 and Under	Greensleeves, Plus own choice	\$15	\$50
C6		piece of no more than 5 minutes <small>*Competitors must present themselves as artists to an audience; presentation, dress and stage-craft all being important.</small>		
C7	13 and Under	I'm Gonna Ride the Ski Mobile	\$10	\$20
C8	14 and Under	Mambo Jambo	\$15	\$20
SP251	15 and Under	Introducing the Squeezebox,	\$15	\$50
C9		Plus own choice piece of not more than 8 minutes. <small>*Competitors must present themselves as artists to an audience; presentation, dress and stage-craft all being important.</small>		
C10	16 and Under	March of the Dwarfs	\$15	\$20
SP257	New Zealand Junior	music requirements as per	NA	\$50
C11	Virtuoso Entertainment Championship, 18 years and Under	Round 1 of the "Junior Intl. Coupe Mondiale" category at www.coupemondiale.org		

Class Number	Class Description	Test Music	Music Price	Entry Fee
SP259 C12	New Zealand Junior Solo Championship, 18 years and under	Music requirements as per Round 1 of the "Junior Intl. Coupe Mondiale" category at www.coupemondiale.org	NA	\$50
C13	Open Free Bass	Own Choice, 8 minutes	NA	\$50
C14	Open Electronic	Own Choice, 5 minutes	NA	\$50
SP258 C15	New Zealand Virtuoso Entertainment Solo Championship, 32 years and Under	Music requirements as per the "Intl. Competition for Virtuoso Entertainment Music" Coupe Mondiale category at www.coupemondiale.org	NA	\$50
SP252 C16	New Zealand Accordion Solo Championship, 32 years and under	Music requirements as per the "Masters Coupe Mondiale" category at www.coupemondiale.org	NA	\$50

Note: Failure to observe the minimum and maximum playing times will result in a penalty.

Standard Solo Classes

Entry fee: \$10

NOTE: A contestant may not in the same year enter both a Standard solo class and an International or New Zealand Championship solo class. Contestants who have been placed first or second in a Championship solo class in the previous year are not eligible to enter a Standard Solo Class. Standard Category contestants perform one Own Choice piece only.

Class Number	Class Description	Time Limit
S101	5 years and under, up to 6 months playing experience	2 minutes
S102	5 years and under, more than 6 months playing experience	2 minutes
S103	6 years, up to 6 months playing experience	2 minutes
S104	6 years, more than 6 months playing experience	2 minutes
S105	7 years, up to 6 months playing experience,	2 minutes
S106	7 years, more than 6 months playing experience	2 minutes
S107	8 years, up to 6 months playing experience	2 minutes
S108	8 years, more than 6 months playing experience	2 minutes
S109	9 years, up to 6 months playing experience	3 minutes
S110	9 years, more than 6 months playing experience	3 minutes
S111	10 years, up to 1 year playing experience	3 minutes
S112	10 years, more than 1 year playing experience	3 minutes
S113	11 years, up to 1 year playing experience	3 minutes
S114	11 years, more than 1 year playing experience	3 minutes
S115	12 and 13 years, up to 1 year playing experience	3 minutes
S116	12 and 13 years, more than 1 year playing experience	3 minutes
S117	14 and 15 years, up to 1 year playing experience	3 minutes
S118	14 and 15 years, more than 1 year playing experience	5 minutes
S119	16 years and over, up to 2 years playing experience	3 minutes
S120	16 years and over, more than 2 years playing experience	5 minutes
S121	30 years and over, up to 2 years playing experience	5 minutes
S122	30 years and over, more than 2 years playing experience	5 minutes

Qualified Solo Classes

Entry fee: \$10

NOTE: Qualified Category contestants perform one Own Choice piece only.

Qualified Category classes are regulated by actual age.

Class Number	Class Description	Time Limit
Q201	5 years and under solo	2 minutes
Q202	6 years solo	2 minutes
Q203	7 years solo	2 minutes
Q204	8 years solo	2 minutes
Q205	9 years solo	2 minutes
Q206	10 years solo	3 minutes
Q207	11 years solo	3 minutes
Q208	12 years solo	3 minutes
Q209	13 years solo	3 minutes
Q210	14 years solo	5 minutes
Q211	15 years solo	5 minutes
Q212	16 years solo and over	5 minutes
Q213	12 years and under, Free Bass	3 minutes
Q214	13 to 15 years, Free Bass	5 minutes
Q215	16 years and over, Free Bass	5 minutes
Q216	12 years and under, Own Composition	3 minutes
Q217	Own Composition Open	5 minutes
Q218	10 years and under, Light Classical	3 minutes
Q219	11 and 12 years, Light Classical	3 minutes
Q220	13 to 15 years, Light Classical	5 minutes
Q221	16 years and over, Light Classical	5 minutes
Q222	10 years and under, Original Accordion Composition	3 minutes
Q223	11 and 12 years, Original Accordion Composition	3 minutes
Q224	13 to 15 years, Original Accordion Composition	5 minutes
Q225	16 years and over, Original Accordion Composition	5 minutes
Q226	10 years and under, Entertainment	3 minutes
Q227	11 and 12 years, Entertainment	3 minutes
Q228	13 to 15 years, Entertainment	5 minutes
Q229	16 years and over, Entertainment	5 minutes
Q230	10 years and under, Ethnic	3 minutes
Q231	11 and 12 years, Ethnic	3 minutes
Q232	13 to 15 years, Ethnic	5 minutes
Q233	16 years and over, Ethnic	5 minutes
Q234	12 years and under, Accordion Solo with Self Vocal	3 minutes
Q235	Open Accordion Solo with Self Vocal	5 minutes

Improvisation Solo - No written music required.

Class Number	Class Description	Time Limit
Q236	10 years and under, Improvisation	3 minutes
Q237	11 and 12 years, Improvisation	3 minutes
Q238	13 to 15 years, Improvisation	3 minutes
Q239	16 years and over, Improvisation	5 minutes
Q240	Open Electronic Improvisation	5 minutes

Sight Reading

Class Number	Class Description	Time Limit
Q241	10 years and under Sight Reading	2 minutes
Q242	11 and 12 years Sight Reading	2 minutes
Q243	13 to 15 years Sight Reading	3 minutes
Q244	16 years and over Sight Reading	3 minutes

Duet Class Schedule

Entry Fee: \$30 Championship, \$20 Qualified. A duet shall consist of two performers, and if two accordions, then both must play bass. The age of the eldest duet partner shall decide which age class a duet is eligible to enter. All times listed below are maximum playing times.

Please ensure you have read all parts of this Prospectus relevant to your class, especially the "Regulations and Modus Operandi", before sending in your entry.

N.Z. Championship Duet Classes

Class Number	Class Description	Test Music	Time Limit
C30	10 years and under duet	Own Choice	5 minutes
C31	12 years and under duet	Own Choice	5 minutes
C32	15 years and under duet	Own Choice	5 minutes
C33	17 years and under duet	Own Choice	5 minutes
C34	Open Duet	Own Choice	8 minutes
C35	Open Entertainment Accordion Duet, (can include 1 electronic accordion)	Own Choice	5 minutes

Qualified Duet Classes

Qualified Category contestants perform own choice music only.

Class Number	Class Description	Time Limit
Q260	10 years and under duet	3 minutes
Q261	12 years and under duet	3 minutes
Q262	Open duet	5 minutes
Q263	12 years and under Accordion with Vocal	3 minutes
Q264	Open Accordion with Vocal	5 minutes
Q265	Open Improvisation Duet	5 minutes
Q266	12 years and under, Accordion with other instrument	3 minutes
Q267	Open Accordion with other instrument	5 minutes

Trio/Ensemble Class Schedule

Entry Fee: \$35 Championship, \$25 Qualified.

A performance by 3 to 6 players. Trio/Ensemble Category contestants perform Own Choice music only. All times listed below are maximum playing times. The age of the eldest member of a trio/ensemble shall decide which age class a group is eligible to enter.

Please ensure, you have read all parts of this Prospectus relevant to your class, especially the "Regulations and Modus Operandi", before sending in your entry.

N.Z. Championship Trio/Ensemble Classes

Class Number	Class Description	Time Limit
C50	12 years and under Trio/Ensemble	5 minutes
C51	17 years and under Trio/Ensemble	8 minutes
C52	Open Trio/Ensemble	8 minutes
C53	Open Entertainment Ensemble(can include 1 electronic accordion)	8 minutes

Qualified Trio/Ensemble Classes

Class Number	Class Description	Time Limit
Q283	Open accordion/s, with other instrument/s or vocal/s	3 minutes
Q284	Light Classical Group	5 minutes
Q285	Entertainment Open Group, with/without other instrument/s and vocal/s	5 minutes

Orchestra Class Schedule

An orchestra is defined as a group of not less than 7 performers excluding the conductor. In all orchestra classes, at least 60% of performers excluding the conductor must use acoustic accordion. All music is Own Choice. All times listed below are maximum on/off stage.

All performers, whether or not they play the accordion, must be members of the NZAA.

Please ensure, you have read all parts of this Prospectus relevant to your class, especially the "Regulations and Modus Operandi", before sending in your entry.

N.Z. Championship Orchestra Classes

Class Number	Class Description	Time Limit	Entry Fee
C60	Junior Accordion Orchestra Championship, 12 Years and Under	12 minutes	\$40
C61	Intermediate Accordion Orchestra Championship, 17 years and Under. Two or more contrasting pieces	15 minutes	\$50
C62	New Zealand Accordion Orchestra Championship, Open to all players. Programme of contrasting pieces	30 minutes	\$60
C63	Open Entertainment Accordion Orchestra Championship, Open to all players. The programme will be judged on its general public entertainment appeal	20 minutes	\$60

Standard Orchestra Class

Class Number	Class Description	Time Limit	Entry Fee
S150	Standard Class Orchestra, Players with less than 2 years playing experience	10 minutes	\$40

Regulations and Modus Operandi

NEW ZEALAND ACCORDION ASSOCIATION INCORPORATED OFFICIAL RULES FOR CONTESTS

NAME:

1. These are the rules for the competitions conducted by the New Zealand Accordion Association Incorporated and shall be known as 'The New Zealand Accordion Association Incorporated Competition Rules.'

DEFINITIONS:

2. Unless the context otherwise requires:

"Accordion" means an acoustic accordion without using amplification or electronic attachment.

"Contest Year" means that period of time starting at the 9th day of June in one year and running to the 8th day of June in the next year.

"New Zealand Accordion Championships and Festival" (hereinafter referred to as the "NZAA Competitions") means that competition organised and conducted by the Association for duly qualified competitors being financial members of the association.

"NZAA Competitions Secretary" means that person appointed by the New Zealand Accordion Association Incorporated Committee for that purpose.

"Orchestra" means a group of not less than seven performers, including a minimum percentage of accordions as specified in accordance with Rule 4 hereof.

"Playing time" means the actual playing time only. It excludes breaks between movements and pieces.

DESCRIPTION:

3. The NZAA Competitions conducted by the New Zealand Accordion Association Incorporated shall be open only to financial members of the Association, whose names are entered in the National Register. These members must be resident in New Zealand unless dispensation is authorised by the Committee. This dispensation should not apply to NZ Championship Classes.
4. The NZAA Competitions shall be divided into the categories outlined in Rule 5 hereinafter, and shall be further divided into such classes as the Committee shall from time to time decide, PROVIDED THAT by the 1st day of December prior to a projected NZAA Competitions' date the Committee must publish a full list of the classes available and that shall be the classes for that Contest Year.
5. Performance Categories
 - International Championship**
Championship classes which are not limited to New Zealand resident entrants. Regulated by the contestants' actual age as at the 8th day of June of the Contest Year.

New Zealand Championship

Championship classes which are limited to New Zealand resident entrants. Regulated by the contestants' actual age as at the 8th day of June of the Contest Year.

Standard

Classes open to entrants from any nation or territory. Regulated by the contestants' actual age as at 8th day of June of the Contest Year and playing experience.

Qualified

Classes open to entrants from any nation or territory. Regulated by the contestants' actual age as at 8th day of June of the Contest Year and/or by specific styles of music.

Festival

Classes open to entrants from any nation or territory. Performances that are not adjudicated.

6. ELIGIBILITY RULES:

- (a) Contestants who have been placed first or second in a NZ Championship Solo Class in the previous year are not eligible to enter Standard Solo Classes.
- (b) A contestant may not in the same year enter a NZ Championship Solo Class and a Standard Solo Class.
- (c) Contestants may enter Qualified as well as Championship or Standard Classes in any given year.
- (d) Each class may be entered once only in any Contest Year, except for:
 - (i) Duet or ensemble classes which may be entered more than once provided it is with different partners.
 - (ii) Orchestral classes, where conductors may enter more than one orchestra provided each orchestra is comprised of totally different members.
- (e) A contestant may only enter the same piece of music once at each NZAA Competitions.

7. Where a section is restricted by age, the date of birth shall be stated on the entry form and verified by the NZAA Competitions Secretary. To enter a Class a contestant shall be of the age stated or under that age on the 8th day of June of the Contest Year.

8. Soloists placed first in any previous International Championship class may not enter the same or lower age International Championship class in any subsequent contest. Soloists placed first in any previous N.Z. Championship class may not enter the same or lower age N.Z. Championship class in any subsequent contest. Any exceptions to this rule are specified earlier in this Prospectus.

9. Except if otherwise specified, competitors entering sections requiring an own choice piece, must supply to the Competition Official on the competitions day, a copy of their own choice piece music, with all coupler and expression marks, cuts and omissions clearly marked.
10. Entries are to be made on the official entry form and must reach the NZAA Competitions Secretary or other designated person on or before the required date, accompanied by the appropriate fee.
11. (a) All entry forms, fees, correspondence to be sent to the NZAA Competitions Secretary or other designated person.
(b) The NZAA Committee reserves the right to refuse any entry.
12. Any question relating to the interpretation of any rule of the association shall be decided by the Committee whose decision shall be final.
13. A duet shall consist of two performers and if two accordions then both must play bass.
14. In trio and ensemble classes, bass to be played at leader's discretion by a bass accordion and/or accordion bass. One amplified instrument permitted.
15. The categories and rules for orchestras shall be as set in accordance with Rule 4 hereof PROVIDED THAT orchestras who win the New Zealand Accordion Orchestra Championship Class twice consecutively must stand down for one year before re competing.

CONDUCT OF COMPETITIONS:

16. The Committee shall have the general power to conduct the administration of competitions.
17. The Accordion Examination Board of New Zealand Incorporated shall recommend to the N.Z.A.A. committee, persons suitable to act as adjudicators at the National Championship, and the Committee, in selecting adjudicators for the N.Z.A.A. Competitions shall choose from this list, persons so recommended. These adjudicators to be accordionists, or accordion teachers of note, or musicians of suitable stature judging in conjunction with an accordionist adjudicator as described herein.
18. The order in which the competitors in each section of the Championship classes shall play at the competitions, shall be decided by lot, by the official appointed for that purpose, before the competition in that section. The order in which the competitors in all other categories shall play shall be decided by the Committee.
19. Contestants must report where directed, prior to the notified report time. The committee will have the right to decide the merits of a case of unavoidable late arrival of any contestant.
20. No competitor or performer may rehearse or practice at the competition venue during the competition weekend. The only exceptions to this are contestants in class C16/SP252 and Festival items who may practice for 20 minutes before their performance in an area designated by the NZAA Committee.
21. Entrants in any section failing to take part in the contest or failing to comply with the rules shall be automatically disqualified, and their entry fees forfeit.

22. For most classes timing is the responsibility of the MC. It is his/her responsibility to stop a performance if the contestant excessively exceeds the prescribed playing time limit.
Note: Some International Championship and New Zealand Championship classes are subject to time penalties. Refer to the Class Schedule section for these exceptions.
23. The adjudicators' decision in all matters relating to judging will be final.
24. The names of the winning competitors will be announced as soon as convenient.
25. Audio and video recorders will be prohibited from the premises where contests are held under the auspices of the New Zealand Accordion Association Incorporated, except with the express permission of the Committee.
26. Only music stands supplied by the New Zealand Accordion Association Incorporated are to be used in the solo and duet sections.
27. Amplification and electronic attachments are permitted only as specified in accordance with Rule 4 hereof.
28. Protests connected with the contests must be made in writing, accompanied by such fee as is determined by the Committee, to a member of the New Zealand Accordion Association Incorporated Committee within one hour of the results being given. The fee is forfeited should the protest not be upheld by the committee, or a protest committee appointed for the purpose, whose decision is final.

JUDGING:

29. Music shall be played and judged as written, except in those classes where the provision of music for the adjudicators is not a requirement.
30. A minimum tempo marking may be put on test music.
31. Adjudicators will be required to allot marks, and may incorporate constructive comments.
32. The adjudicators may award other than first place, if, in their opinion, first place is not warranted.

GENERAL:

33. All accordion cases and stands must be marked with the competitors and/or owners names.
34. There shall be no restriction as to the make of accordion used by the competitors.
35. Trophies offered for competition annually may be held until the next contest. It is incumbent upon the holder to ensure the return of trophies 21 days before that date. Holders of trophies may arrange at their own cost for their initials and surname, and the year of their holding to be engraved upon the trophy.
36. A music selection committee of at least three persons, who shall be accordion players or teachers of note, shall be appointed annually by the New Zealand Accordion Association

Committee, and shall determine the test music to be played at any competition.

37. Submission of an entry form shall be deemed as full and complete acceptance and understanding of these competition rules.
38. These competition rules shall only be altered, added to or rescinded by resolution at the annual general meeting or at any special meeting called for the purpose, provided that notice of any such alterations, addition or rescission shall have circulated to members at least twenty-eight (28) days prior to such meeting. Any proposed alteration, addition, or rescission of the rules may be amended at the meeting. A two-thirds majority of those present and entitled to vote shall be necessary to carry the motion.
39. These rules and regulations known as the New Zealand Accordion Association Incorporated Competition Rules, shall be placed as an appendix to the Constitution and be part of that document.

THE ADJUDICATING SYSTEM

1. The names of the adjudicators will be printed in the Official Programme and they include New Zealand accordionists, plus invited overseas guests.
2. Allocation of Adjudicators to classes is at the discretion of the Adjudicators Co-ordinator, with due regard paid to the type of class, experience, style, other instrument(s), vocals, etc. With particular note given that:
Adjudicators will be asked if there may be some reason why they are ineligible to adjudicate any of the competitors. As per the Coupe Mondiale practice, reasons may include, but are not limited to:
 - teacher/student relationship within the previous two years,
 - close personal or professional relationship,
 - relatives etc
3. All classes, including all South Pacific and New Zealand Championship classes, are sight judged.
4. Two sets of judges operate at the same time to alternate the classes. This acts as a time saving measure to reduce the period between each competitor and also to increase the interest for the audience who will not have to listen to several performances in a row of the same piece.

Assessment Criteria

1. ASSESSMENT CRITERIA:
Classes C6/SP250, C9/SP251, C11/SP257, C12/SP259, C15/SP258, C16/SP252 and will all be assessed as follows:

Performance	80 marks
Program	10 marks
Stagecraft / Presentation	10 marks

While all other classes are to be assessed as follows:

Performance, Program (where applicable) and Stagecraft / Presentation 100 marks

2. DEFINITIONS:
“Performance” refers to the overall musicianship of the performance, including technical proficiency and performance by memory.

“Program” refers to the degree of difficulty of the selected programme and where applicable consisting of different styles, character and composers.

“Stagecraft / Presentation” means the competitors ability to present himself/herself to an audience as an artist. It includes but is not limited to:
 - Introduction
 - Dress
 - Audience Interaction

Marking

1. The adjudicators are required to observe a consistent standard of adjudication. Each performance will be marked utilizing the following guidelines:

90 to 100	Excellent
80 to 90	Very Good
70 to 80	Good
60 to 70	Fair
50 to 60	Very poor

2. Awarding of placing:
 - a. For a placing below an equal placing the next placing is not awarded, eg if a first equal placing is awarded then 2nd place is not awarded etc.
 - b. As stated in Rule 32: “The adjudicators may award other than first place, if, in their opinion, first place is not warranted”.

Calculation Of Results

1. The calculation of the results from the adjudicators' mark sheets shall be carried out at the Results Calculation Table. If more than one adjudicator, then the marks are to be averaged.
2. The Results Calculation Table personnel shall then calculate and apply any time penalty marks for any failure to follow the maximum or minimum playing time for specified classes.

The Classes for which time penalties are to be applied are: C6/SP250, C9/SP251, C11/SP257, C12/SP259, C15/SP258, and C16/SP252.

Time penalties are to be calculated as follows:

- a. Timing will be the responsibility of a timekeeper appointed independently of the adjudicators.
- b. Penalty points will be calculated as per the Coupe Mondiale rules.



NEW ZEALAND ACCORDION ASSOCIATION

4 O'Neills Avenue
Takapuna
Auckland 0611
New Zealand

website www.accordion.co.nz
email nzaasecretary@yahoo.com
phone +64-9-489 8316
fax +64-9-486 6099



New Zealand member of Confédération Internationale des Accordéonistes (CIA - IMC-UNESCO)

Music Order Form

Personal Details

First Name: _____ Surname: _____

Street Address: _____

City: _____ Postcode: _____

Date of Birth*: _____ Phone Number: _____

Email: _____ Mobile Number: _____

Note: * If under 21 years please provide.

Please send the following competition test music

Class	Music	Price
Total monies enclosed*		\$

* Either send monies via cheque to NZAA or contact Megan Jennings for internet banking options

I require

- Own choice class entry forms (for all classes without test music, except orchestras)
- Orchestra class entry forms

Please email or post the entry forms.

Note: Entry forms for classes with a test piece requirement are supplied when the test music is ordered.