

2020 South Pacific International Championship Solo Classes

Due to Covid-19 only the South Pacific solo classes will run in 2020. At the moment we still have an alternative venue in the Rose Centre on Saturday 30th May but have provision to run these classes digitally on that day if required so KEEP PRACTISING.

THERE WILL BE NO ENTRY FEES CHARGED FOR 2020

THERE WILL BE NO PRIZE MONEY FOR 2020

ENTRIES CLOSE 17th APRIL Fill out the online entry form at:

www.accordion.co.nz/2020/2020submitforms.htm

Any questions, contact the Competition Secretary Renee Jeffries: nzaacompsec@gmail.com

Class Number	Description	Entry Fee
SP249 C3	South Pacific Accordion Solo Championship 9 years and under, music requirements as per the New Zealand Solo Championship C3.	No Fee
SP250 C6	South Pacific Accordion Solo Championship 12 years and under, music requirements as per New Zealand Solo Championship C6.	No Fee
SP251 C9	South Pacific Accordion Solo Championship 15 years and under, music requirements as per New Zealand Solo Championship C9.	No Fee
SP257 C11	South Pacific Junior Virtuoso Entertainment Championship, 18 years and under, music requirements as per the "Junior Intl. Competition for Virtuoso Entertainment Music" Coupe Mondiale category at www.coupemondiale.org	No Fee
SP259 C12	South Pacific Junior Solo Championship, 18 years and under, music requirements as per Round 1 of the "Junior Intl. Coupe Mondiale" category at www.coupemondiale.org	No Fee
SP258 C15	South Pacific Virtuoso Entertainment Solo Championship, 32 years and under, music requirements as per the "Intl. Competition for Virtuoso Entertainment Music" Coupe Mondiale category at www.coupemondiale.org	No Fee
SP252 C16	South Pacific Accordion Solo Championship, 32 years and under, music requirements as per the "Masters Coupe Mondiale" category at www.coupemondiale.org	No Fee

NEW ZEALAND ACCORDION ASSOCIATION

The New Zealand member of the Confédération International des Accordéonistes - IMC-UNESCO



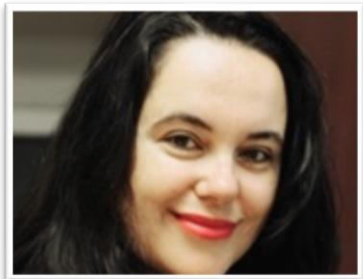
South Pacific International & New Zealand National Accordion Championships & Festival **2020 Prospectus**

\$500 FIRST PRIZE

Saturday 30 May & 31 May 2020

Venue: Raye Freedman Arts Centre
Epsom Girls Grammar School
Silver Road (off Gillies Ave)
Epsom
Auckland, New Zealand

COMPETITION ENTRIES CLOSING DATE 17 APRIL 2020



President's Welcome

I extend a warm invitation to all accordionists from not only New Zealand but also from all over the world to participate in the 2020 South Pacific International and New Zealand National Accordion Championships and Festival. Our association has staged this event since 1972. In addition to the extensive list of competitive classes, we also encourage festival performances both from New Zealand and internationally in solo, group, ensemble and orchestra format. This event attracts enthusiastic and appreciative audiences who enjoy all genres of music.

We are delighted to once again have the use of the Raye Freedman Arts Centre. This outstanding venue is ideally suited to our requirements with excellent acoustics and facilities all under one roof. This year, we are excited to have in attendance, the winner and their teacher of the international competition where competitors submitted entries performing Gary Daverne's music. On Sunday afternoon, we plan to have a performance of a junior orchestra especially assembled together for this event. The NZAA will also be honouring the President of the Shanghai Accordion Association and Secretary of the China Accordion Association, Crystal Wang with a special award. On Sunday evening, a dinner featuring accordion entertainment will be held during which we will present trophies to the South Pacific Championship winners. This event is always popular so make sure you do not miss out.

An additional competitive class has been included for 2020 being SP249 South Pacific Accordion Solo Championship 9 years and under class.

In 2021, the NZAA will be celebrating its 50th anniversary. We are certainly excited about marking this milestone and ask you all to begin to turn your minds to helping us celebrate in style.

I look forward to seeing you all to enjoy a weekend of fun, friendship and great music.

Sonja Palinich
President
New Zealand Accordion Association

Committee

President:	Sonja Palinich	Vice-President:	Harley Jones
Secretary:	Heather Masefield	Treasurer:	Amber Masefield

Committee: Bor-Kuan Song, Catherine Giorza , Jessica Chen , Megan Jennings, Patrick Liu, Stephen Cope, Tamba Carleton.

NZAA Competitions Secretary: Renee Jeffries, 19b Brixton Road, Little Manly, Whangaparaoa, 0930
Phone +64 21 266 5776
E-mail: nzaacompsc@gmail.com

NZAA Address: 53 Kitchener Road, Milford, Auckland 0620
Phone: +64 9 486 3012
E-mail: nzaasecretary@yahoo.com

Contents

General Information	4
Official Rules.....	4
The Closing Date for Entries	4
Competition and Festival Prospectus Format	4
Entry Forms and Entry Fees.....	4
Intellectual Property.....	5
Membership Categories and Subscription Fees	5
Test Music.....	5
Own Choice Music.....	5
Official Programme and Timetable	5
Performance Category Descriptions	6
South Pacific International Championship Classes.....	6
New Zealand Championship Classes	6
Coupe Mondiale Qualification for New Zealand Citizens.....	6
Qualified Classes.....	7
Standard Classes.....	7
Trophies	7
Festival Performances	7
South Pacific International Championship Solo Classes	8
New Zealand Championship Solo Classes.....	9
N.Z Championship Duet Classes	10
Trio/Ensemble Classes.....	10
N.Z Championship Trio/Ensemble Classes	10
Orchestra Classes	11
N.Z Championship Orchestra Classes	11
Qualified Solo Classes.....	11
Improvisation Solo.....	12
Sight Reading.....	12
Qualified Duet Classes	13
Standard Solo Classes.....	13
Regulations and Modus Operandi	14
Assessment Criteria	18
Marking.....	19
Calculation of Results	19
Music Order Forms.....	20

General Information

Official Rules

This Prospectus forms the official rules for the South Pacific International and New Zealand National Accordion Championships and Festival.

The Closing Date for Entries

Must Reach the Competitions Secretary By: 17th April 2020

Email entries are accepted from entrants overseas, with payment by bank cheque or direct debit to reach the NZAA Competitions Secretary by the closing date.

Note: LATE ENTRIES WILL NOT BE ACCEPTED. NO EXCEPTIONS.

Competition and Festival Prospectus Format

The South Pacific International and New Zealand National Accordion Championships and Festival offer five performance categories:

- International Championship
- New Zealand Championship
- Qualified
- Standard
- Festival

Each performance category includes a selection of classes. Details of the classes, music requirements, time limits, test pieces where applicable, entry fees etc. are found in the Class Schedule section.

Entry Forms and Entry Fees

For all International and New Zealand Championship Classes with a Test Piece requirement, only the official numbered entry forms will be accepted. These are supplied when you purchase your music from the NZAA Competitions Secretary.

Entry forms for all other classes are available from the NZAA Competitions Secretary and from teachers who wish to keep a supply of them. Additional copies of these may be photocopied. Incorrectly completed Entry Forms will not be accepted.

Entry Fees are specified in the Class Schedule Section of this Prospectus.

Please Note: Each entrant must be a current financial member of the New Zealand Accordion Association Inc.

Intellectual Property

The NZAA retains the rights to, and the use of, all intellectual property from the competition weekend.

Membership Categories and Subscription Fees

For the year beginning 1st April 2020

Membership	Fee
Ordinary Membership	\$25
Family Membership (The parents and children of one family living in the same dwelling)	\$50
Introductory Membership (First year of membership for those under 18)	\$15

Test Music

The International Championship Category and New Zealand Championship Category Test Music, is available from the NZAA Competitions Secretary from mid-January until the entry closing date. Please note: Money must accompany all orders and no music will be issued without full payment. All music is sold as a package, which includes the official numbered entry form. The price includes postage within New Zealand.

Test music must be purchased from the NZAA Competitions Secretary to ensure each competitor has the correct edition of the music including any changes (i.e. tempo, no repeats etc.) as prescribed by the NZAA Music Selection Committee.

The Test Music is available for viewing (by appointment only) from mid-January from the following:

- NZAA Competitions Secretary, Renee Jeffries
- NZAA Secretary in Auckland, Heather Masefield
- AATA President Tania Lukic-Marx, 131 Caroola St, Canley Vale, Sydney, 2166 NSW
Phone/Fax: +61 2 9727 6608.

Own Choice Music

Each competitor is required to provide one copy of their Own Choice music for the adjudicators, (except for Improvisation Classes and Festival performances). This music is to be handed to the NZAA Official when reporting for your class.

Note: Failure to supply music for the adjudicators will disqualify the contestant.

Official Programme and Timetable

The Programme for this event, including the timetable, will be mailed to all NZAA members approximately one week prior to the competitions. Overseas entrants will receive a Programme upon arrival in New Zealand.

Performance Category Descriptions

South Pacific International Championship Classes

Entrants compete for the honour of winning a South Pacific Championship title. Note: Championship classes are based on age.

Any competitor, who wins an age restriction International Championship Solo class, cannot enter any lower age International Championship class again. Classes SP250, SP251, SP252, SP257, SP258, SP259, SP260 can be won twice consecutively before the contestant must stand down for one year before re-competing in the same class.

Winners are presented with a trophy, which must remain in New Zealand.

New Zealand Championship Classes

Entry to these classes is restricted to New Zealand residents. By entering a class in the N.Z. Championship Category entrants compete for the honour of winning a New Zealand Championship title.

Each N.Z. Championship class with an age limit has a Test Piece which every competitor must perform. Some classes require one or more Own Choice pieces to be performed in addition to the Test Piece.

A competitor; who wins an age restricted N.Z. Championship Solo class, cannot enter that same class or any lower age N.Z. Championship Solo class again.

All place getters of N.Z. Championship classes are presented with certificates.

Coupe Mondiale Qualification for New Zealand Citizens

New Zealand citizens wishing to enter any of the categories of the CIA Coupe Mondiale must first qualify and receive the endorsement of the New Zealand member of the CIA, the New Zealand Accordion Association Inc. Qualifiers may have their Coupe Mondiale entry fee subsidised by the NZAA. Prospective Coupe Mondiale candidates must enter the NZAA Competition of that same year in the (nearest) relevant category in order to qualify to represent New Zealand.

If a prospective NZ Coupe Mondiale candidate is unable to enter the NZAA Competition of that same year, audio-visual means may be used to ascertain if the candidate is of suitable standard to receive the endorsement of the NZAA. The application must be submitted to the Competitions Secretary before 1 June prior to the Coupe Mondiale of that same year. The fee will be identical to the entry fee for the relevant NZAA South Pacific class for the applicant.

Qualified Classes

Entrants in these classes may be from any nation or territory. Classes in the Qualified Category are based on age. All music is Own Choice. The Qualified Category includes classes for different types of music, such as light classical, entertainment, ethnic, accordion with other instruments and accordion with vocal, etc. Stage presentation is also considered. This offers all competitors a suitable class in which to perform their favourite music and demonstrate the versatility of the accordion.

An Original Accordion Composition is a piece written specifically for the accordion, for example, by Frosini, Diero, Mews and Daverne etc.

For Improvisation Classes, the performer is not required to provide written music for the adjudicators. This is to encourage creativity in arrangement and performance. Sight reading classes are held in a private room without an audience.

All place getters in these classes will receive certificates.

Standard Classes

Entrants in these classes may be from any nation or territory. Classes in the Standard Category are regulated by both age and playing experience. This offers people who might have been learning for a short period of time, or have begun learning later in life, the opportunity to compete on a more equal basis. All music is Own Choice.

A contestant may not enter Standard and Championship Solo categories in the same year. A contestant may not enter a Standard Class if they have been placed first or second in a Championship solo class the previous year.

All place getters of Standard classes are presented with certificates and ribbons.

Trophies

All trophies must be returned to the NZAA Secretary no later than 21 days prior to the next year's competitions. Lost or damaged trophies will incur a replacement cost.

Festival Performances

Any soloist or group performance featuring the accordion is invited to participate. This is an ideal opportunity for any hobbyist, accordion lover or professional to perform for an enthusiastic friendly audience. Festival performers may be from any nation or territory. This category is for non-competitive performances that are not adjudicated.

All applications are welcomed. Similar restrictions apply with regard to entry fees and closing dates as for classes in other categories. Please note that each performer must be a current financial member of the New Zealand Accordion Association Inc.

South Pacific International Championship Solo Classes

New Zealand residents entered in the following classes will be automatically entered into the equivalent New Zealand Solo Championship Class dependent upon their eligibility as set out on page 6 of this Prospectus. New Zealand entrants play only once and pay one entry fee for the two classes, even though that one performance may result in winning both the New Zealand and South Pacific Championship titles. In addition to the prize money the winner of SP252 will receive a personalised web page on the Accordions Worldwide web site for 1 year from the competition date.

Class Number	Description	Entry Fee
SP249 C3	South Pacific Accordion Solo Championship 9 years and under, music requirements as per the New Zealand Solo Championship C3. 1 st Prize \$50	\$50
SP250 C6	South Pacific Accordion Solo Championship 12 years and under, music requirements as per New Zealand Solo Championship C6. 1 st Prize \$50	\$50
SP251 C9	South Pacific Accordion Solo Championship 15 years and under, music requirements as per New Zealand Solo Championship C9. 1 st Prize \$75	\$50
SP257 C11	South Pacific Junior Virtuoso Entertainment Championship, 18 years and under, music requirements as per the "Junior Intl. Competition for Virtuoso Entertainment Music" Coupe Mondiale category at www.coupemondiale.org 1 st Prize \$100	\$50
SP259 C12	South Pacific Junior Solo Championship, 18 years and under, music requirements as per Round 1 of the "Junior Intl. Coupe Mondiale" category at www.coupemondiale.org 1 st Prize \$100	\$50
SP258 C15	South Pacific Virtuoso Entertainment Solo Championship, 32 years and under, music requirements as per the "Intl. Competition for Virtuoso Entertainment Music" Coupe Mondiale category at www.coupemondiale.org 1 st Prize \$300	\$50
SP252 C16	South Pacific Accordion Solo Championship, 32 years and under, music requirements as per the "Masters Coupe Mondiale" category at www.coupemondiale.org 1 st Prize \$500	\$50
SP260 C53	South Pacific Open Entertainment Ensemble Open Entertainment Ensemble (may include 1 electronic Accordion/ Vocalist or other instrumentalist).	\$50

Note: Failure to observe the minimum and maximum playing times may result in a penalty. Please ensure that you have read all parts of this Prospectus relevant to your class, especially the "*Regulations and Modus Operandi*", before sending in your entry.

New Zealand Championship Solo Classes

Contestants in Classes C3, C6, C9, C11, C12, C15, C16, C53 are automatically entered in the equivalent South Pacific Solo Championship Class dependent upon their eligibility as set out on page 6 of this Prospectus. Competitors must present themselves as artists to an audience; presentation, dress and stage-craft all being important. New Zealand entrants play only once and pay one entry fee for the two classes, even though that one performance may result in winning both the New Zealand and South Pacific Championship titles. All times listed are maximum playing times unless otherwise specified.

New Zealand Championship Solo Classes

Class Number	Class Description	Test Music	Music Price	Entry Fee
C1	7 and Under	Deck the Halls	\$10	\$20
C2	8 and Under	Serenade	\$10	\$20
SP249	9 and Under	Clear Fingers	\$10	\$20
C3		Plus own choice piece of no more than 3 minutes		
C4	10 and Under	Julida Polka	\$10	\$20
C5	11 and Under	Gigue in A	\$10	\$20
SP250	12 and Under	Aria in C	\$10	\$20
C6		Plus own choice piece of no more than 5 minutes		
C7	13 and Under	Jocelyn	\$10	\$20
C8	14 and Under	Starlight Schottische	\$15	\$20
SP251	15 and Under	Waltz for Stephanie	\$15	\$50
C9		Plus own choice piece of not more than 8 minutes.		
C10	16 and Under	Andante and Variations	\$15	\$20
SP257	New Zealand Junior	Music requirements as per the	NA	\$50
C11	Virtuoso Entertainment Championship, 18 Years and Under	"Junior Virtuoso Intl. Coupe Mondiale" category at www.coupemondiale.org		
SP259	New Zealand Junior	Music requirements as per	NA	\$50
C12	Solo Championship, 18 Years and Under	Round 1 of the "Junior Intl. Coupe Mondiale" category at www.coupemondiale.org		
C13	Open Free Bass	Own Choice, 8 minutes	NA	\$50
C14	Open Electronic	Own Choice, 5 minutes	NA	\$50
SP258	New Zealand	Music requirements as per the	NA	\$50
C15	Virtuoso Entertainment Solo Championship, 32 Years and Under	"Intl. Competition for Virtuoso Entertainment Music" Coupe Mondiale category at www.coupemondiale.org		
SP252	New Zealand	Music requirements as per the	NA	\$50
C16	Accordion Solo Championship, 32	"Masters Coupe Mondiale" category at		

Note: Failure to observe the minimum and maximum playing times may result in a penalty. Please ensure that you have read all parts of this Prospectus relevant to your class, especially the "*Regulations and Modus Operandi*", before sending in your entry.

N.Z. Championship Duet Classes

Class Number	Class Description	Test Music	Time Limit
C30	10 years and under duet	Own Choice	5 minutes
C31	12 years and under duet	Own Choice	5 minutes
C32	15 years and under duet	Own Choice	5 minutes
C33	17 years and under duet	Own Choice	5 minutes
C34	Open Duet	Own Choice	8 minutes
C35	Open Entertainment Accordion duet, (may include 1 Electronic accordion)	Own Choice	5 minutes

Duet Classes

Entry Fee: \$30 Championship, \$20 Qualified. A duet shall consist of two performers, and if two accordions, then each accordionist must play both treble and bass. The age of the eldest duet partner shall decide which age class a duet is eligible to enter. All times listed are maximum playing times. Please ensure you have read all parts of this Prospectus relevant to your class, especially the "*Regulations and Modus Operandi*", before sending in your entry.

Trio/Ensemble Classes

Entry Fee: \$35 Championship, \$25 Qualified.

A performance by 3 to 6 players. Trio/Ensemble Category contestants perform Own Choice music only. All times listed below are maximum playing times. The age of the eldest member of a trio/ensemble shall decide which age class a group is eligible to enter. Please ensure, you have read all parts of this Prospectus relevant to your class, especially the "*Regulations and Modus Operandi*", before sending in your entry.

N.Z. Championship Trio/Ensemble Classes

Class Number	Class Description	Time Limit
C50	12 years and under Trio/Ensemble	5 minutes
C51	17 years and under Trio/Ensemble	8 minutes
C52	Open Trio/Ensemble	8 minutes
C53/SP260	Open Entertainment Ensemble (may include 1 electronic Accordion/ Vocalist or other nstrumentalist).	8 minutes

Orchestra Classes

An orchestra is defined as a group of not less than 7 performers excluding the conductor. In all orchestra classes, at least 60% of performers excluding the conductor must use acoustic accordion.

All music is Own Choice. All times listed below are maximum on/off stage.

All performers, whether or not they play the accordion, must be members of the NZAA.

Please ensure, you have read all parts of this Prospectus relevant to your class, especially the "*Regulations and Modus Operandi*", before sending in your entry.

N.Z. Championship Orchestra Classes

Class Number	Class Description	Time Limit	Entry Fee
C60	Junior Accordion Orchestra Championship, 12 Years and Under	12 minutes	\$40
C61	Intermediate Accordion Orchestra Championship, 17 years and Under. Two or more contrasting pieces	15 minutes	\$50
C62	New Zealand Accordion Orchestra Championship, Open to all players. Programme of contrasting pieces	30 minutes	\$60
C63	Open Entertainment Accordion Orchestra Championship, Open to all players. The programme will be judged on its general public entertainment appeal	20 minutes	\$60
C64	Junior Orchestra, players less than 2 years playing experience	10 minutes	\$40

Qualified Solo Classes

Entry fee: \$10

Qualified Category contestants perform one Own Choice piece only.

Qualified Category classes are regulated by actual age.

Please ensure that you have read all parts of this Prospectus relevant to your class, especially the "*Regulations and Modus Operandi*", before sending in your entry.

Class Number	Class Description	Time Limit
Q201	5 years and under solo	2 minutes
Q202	6 years solo	2 minutes
Q203	7 years solo	2 minutes
Q204	8 years solo	2 minutes
Q205	9 years solo	2 minutes
Q206	10 years solo	3 minutes
Q207	11 years solo	3 minutes
Q208	12 years solo	3 minutes
Q209	13 years solo	3 minutes
Q210	14 years solo	5 minutes
Q211	15 years solo	5 minutes

Q212	16 years solo and over	5 minutes
Q213	12 years and under, Free Bass	3 minutes
Q214	13 to 15 years, Free Bass	5 minutes
Q215	16 years and over, Free Bass	5 minutes
Q216	12 years and under, Own Composition	3 minutes
Q217	Own Composition Open	5 minutes
Q218	10 years and under, Light Classical	3 minutes
Q219	11 and 12 years, Light Classical	3 minutes
Q220	13 to 15 years, Light Classical	5 minutes
Q221	16 years and over, Light Classical	5 minutes
Q222	10 years and under, Original Accordion Composition	3 minutes
Q223	11 and 12 years, Original Accordion Composition	3 minutes
Q224	13 to 15 years, Original Accordion Composition	5 minutes
Q225	16 years and over, Original Accordion Composition	5 minutes
Q226	10 years and under, Entertainment	3 minutes
Q227	11 and 12 years, Entertainment	3 minutes
Q228	13 to 15 years, Entertainment	5 minutes
Q229	16 years and over, Entertainment	5 minutes
Q230	10 years and under, Ethnic	3 minutes
Q231	11 and 12 years, Ethnic	3 minutes
Q232	13 to 15 years, Ethnic	5 minutes
Q233	16 years and over, Ethnic	5 minutes
Q234	12 years and under, Accordion Solo with Self Vocal	3 minutes
Q235	Open Accordion Solo with Self Vocal	5 minutes

Improvisation Solo - No written music required.

Class Number	Class Description	Time Limit
Q236	10 years and under, Improvisation	3 minutes
Q237	11 and 12 years, Improvisation	3 minutes
Q238	13 to 15 years, Improvisation	3 minutes
Q239	16 years and over, Improvisation	5 minutes
Q240	Open Electronic Improvisation	5 minutes

Sight Reading

Class Number	Class Description	Time Limit
Q241	10 years and under Sight Reading	2 minutes
Q242	11 and 12 years Sight Reading	2 minutes
Q243	13 to 15 years Sight Reading	3 minutes
Q244	16 years and over Sight Reading	3 minutes

Qualified Duet Classes

Qualified Category contestants perform own choice music only.

Class Number	Class Description	Time Limit
Q260	10 years and under duet	3 minutes

Q261	12 years and under duet	3 minutes
Q262	Open duet	5 minutes
Q263	12 years and under Accordion with Vocal	3 minutes
Q264	Open Accordion with Vocal	5 minutes
Q266	12 years and under, Accordion with other instrument	3 minutes
Q267	Open Accordion with other instrument	5 minutes

Standard Solo Classes

Entry fee: \$10

A contestant may not in the same year enter both a Standard solo class and an International or New Zealand Championship solo class. Contestants who have been placed first or second in a Championship solo class in the previous year are not eligible to enter a Standard Solo Class. Standard Category contestants perform one Own Choice piece only.

Class Number	Class Description	Time Limit
S101	5 years and under, up to 6 months playing experience	2 minutes
S102	5 years and under, more than 6 months playing experience	2 minutes
S103	6 years, up to 6 months playing experience	2 minutes
S104	6 years, more than 6 months playing experience	2 minutes
S105	7 years, up to 6 months playing experience,	2 minutes
S106	7 years, more than 6 months playing experience	2 minutes
S107	8 years, up to 6 months playing experience	2 minutes
S108	8 years, more than 6 months playing experience	2 minutes
S109	9 years, up to 6 months playing experience	3 minutes
S110	9 years, more than 6 months playing experience	3 minutes
S111	10 years, up to 1 year playing experience	3 minutes
S112	10 years, more than 1 year playing experience	3 minutes
S113	11 years, up to 1 year playing experience	3 minutes
S114	11 years, more than 1 year playing experience	3 minutes
S115	12 and 13 years, up to 1 year playing experience	3 minutes
S116	12 and 13 years, more than 1 year playing experience	3 minutes
S117	14 and 15 years, up to 1 year playing experience	3 minutes
S118	14 and 15 years, more than 1 year playing experience	5 minutes
S119	16 years and over, up to 2 years playing experience	3 minutes
S120	16 years and over, more than 2 years playing experience	5 minutes
S121	30 years and over, up to 2 years playing experience	5 minutes
S122	30 years and over, more than 2 years playing experience	5 minutes

Regulations and Modus Operandi

NEW ZEALAND ACCORDION ASSOCIATION INCORPORATED
OFFICIAL RULES FOR CONTESTS

NAME:

1. These are the rules for the competitions conducted by the New Zealand Accordion Association Incorporated and shall be known as "The New Zealand Accordion Association Incorporated Competition Rules."

DEFINITIONS:

2. Unless the context otherwise requires:
"Accordion" means an acoustic accordion without using amplification or electronic attachment.

"Contest Year" means that period of time starting at 9 June in one year and running to 8 June of the following year.

"New Zealand Accordion Championships and Festival" (henceforth referred to as the "NZAA Competitions") means the competition organised and conducted by the Association for duly qualified competitors being financial members of the New Zealand Accordion Association.

"NZAA Competitions Secretary" means the person appointed by the New Zealand Accordion Association Incorporated Committee.

"Orchestra" means a group of not less than seven performers. At least 60% of the performers, excluding the conductor, must use acoustic accordions.

"Playing time" means actual playing time only. It excludes breaks between movements and pieces.

DESCRIPTION:

3. The NZAA Competitions conducted by the New Zealand Accordion Association Incorporated shall be open only to financial members of the Association, whose names are entered in the National Register.
4. The NZAA Competitions shall be divided into the categories outlined in Rule 5 hereinafter, and shall be further divided into such classes as the Committee decide from time to time, PROVIDED THAT by the first day of December the Committee must publish a full list of the classes available for the following Contest Year.
5. PERFORMANCE CATEGORIES

South Pacific International Championship

Championship classes which are open to entrants from all nations or territories. Regulated by contestants' actual age as at 8 June of the Contest Year.

All place getters of International Championship classes are presented with certificates. Winners receive a trophy.

New Zealand Championship

Championship classes are limited to New Zealand citizen or a New Zealand permanent resident. Regulated by contestants' actual age as at 8 June of the Contest Year. All place getters of N.Z. Championship classes are presented with certificates.

Qualified

Classes open to entrants from any nation or territory. Regulated by contestants' actual age as at 8 June of the Contest Year and/or playing experience.

All place getters of the qualified classes are presented with certificates.

Standard

Classes open to entrants from any nation or territory. Regulated by contestants' actual age as at 8 June of the Contest Year and/or playing experience.

Festival

Open to entrants from any nation or territory. Performances that are not adjudicated.

6. ELIGIBILITY RULES:

Entries are to be made on the official entry form and must reach the NZAA Competitions Secretary or other designated person on or before the required date, accompanied by the appropriate fee.

All entry forms, fees and correspondence to be sent to the NZAA Competitions Secretary or other designated person.

The NZAA Committee reserves the right to refuse any entry, in accordance with the NZAA rules. The Competition Secretary may amalgamate classes at their discretion.

7. Where a section is restricted by age, the date of birth shall be stated on the entry form and verified by the NZAA Competitions Secretary. To enter a Class a contestant shall be of the age stated or under that age on 8 June of the Contest Year.
8. Soloists placed first in any previous N.Z. Championship class may not enter the same or lower age N.Z. Championship class in any subsequent NZAA competitions (except classes SP250, SP251, SP252, SP257, SP258, SP259, SP260) which can be won twice consecutively, before the contestant must stand down for one year before re-competing in the same class. Contestants who have been placed first or second in a NZ Championship Solo Class in the previous year are not eligible to enter a Standard Solo class.

A contestant may not in the same year enter both a NZ Championship Solo Class and a Standard Solo Class.

Contestants may enter Qualified as well as Championship Classes in any given year. Each class may be entered once only in any Contest Year.

Duet or ensemble classes may be entered more than once provided that any subsequent

entry is with different partners.

Orchestral classes, where conductors may enter more than one orchestra provided each orchestra is comprised of totally different members.

A contestant may only enter the same piece of music once at each NZAA Competitions.

9. Competitors entering sections requiring Own Choice music, must supply to the Competitions Official on the competitions day; a copy of their own choice music, with all coupler and expression marks, additions and omissions clearly marked. Improvisation classes are excluded.
10. A duet shall consist of two performers and if two accordions then both must play treble and bass.
11. In trio and ensemble classes, bass to be played at leader's discretion by a bass accordion and/or accordion bass. One amplified instrument is permitted.
12. Any question or dispute relating to the interpretation of any rule of the Association shall be decided by the NZAA Committee, whose decision shall be final.
13. The categories and rules for orchestras shall be as set in accordance with Rule 4 provided that orchestras who win the New Zealand Accordion Orchestra Championship Class C62 twice consecutively must stand down for one year before re competing.

CONDUCT OF COMPETITIONS:

14. The NZAA Committee shall have the general power to conduct the administration of competitions.
15. The Accordion Examination Board of New Zealand Incorporated shall recommend to the NZAA committee, persons suitable to act as adjudicators for the National Championship. The Committee, will select adjudicators for the NZAA Competitions from this list. Adjudicators must be accordionists, or accordion teachers of note, or musicians of suitable stature assisted by an accordionist adjudicator as described herein.
16. The order in which the competitors in each section of the Championship classes shall play at the competitions, shall be decided by a draw, by the official appointed for that purpose, before the competition in that section. The order in which the competitors in all other categories shall play shall be decided by the Committee.
17. Contestants must report where directed, prior to the notified reporting time. The committee shall have the right to decide the merits of a case of unavoidable late arrival of any contestant.
18. No competitor or performer may rehearse or practice at the competition venue during the competition weekend. Exceptions to this are contestants in classes SP250, SP251, SP252, SP257, SP258, SP259, SP260 and festival items who are permitted 15-20 minutes before their performance in an area designated by the NZAA Committee.
19. Entrants in any class failing to take part in the contest or failing to comply with the rules shall be automatically disqualified, and the contestant's entry fee forfeited.

20. For most classes timing is the responsibility of the MC. It is their responsibility to stop a performance if the contestant excessively exceeds the prescribed playing time limit. Some International Championship and New Zealand Championship classes are subject to time penalties. Refer to the Class Schedule section for these exceptions.
21. The adjudicators' decision in all matters relating to judging will be final.
22. The names of the winning competitors will be announced at the end of each session.
23. Audio and video recorders will be prohibited from the premises where contests are held under the auspices of the New Zealand Accordion Association Incorporated, except with the express permission of the Committee.
24. Only music stands supplied by the New Zealand Accordion Association Incorporated are to be used in the solo and duet sections.
25. Amplification and other electronic attachments are permitted only as specified in accordance with Rule 4.
26. Protests connected with the contests must be made in writing, accompanied by such fee as is determined by the NZAA Committee, to a member of the New Zealand Accordion Association Incorporated Committee within one hour of the results being given. The fee is forfeited should the protest not be upheld by the Committee, or a protest Committee appointed for the purpose, whose decision is final.

JUDGING:

27. Music shall be played and judged as written, except in those classes where the provision of music for the adjudicators is not a requirement.
28. A minimum tempo marking may be put on test music.
29. Adjudicators will be required to allot marks, and may incorporate constructive comments.
30. The adjudicators are not obligated to award first placing in any class, if, in their opinion, first place is not warranted.

GENERAL:

31. All accordion cases, stands and miscellaneous equipment must be marked with the competitor's and/or owner's names.
32. There shall be no restriction as to the make of accordion used by the competitors.
33. Trophies offered for competition annually may be held until the next contest. It is the responsibility of the holder to ensure the return of trophies 21 days before that date. Holders of trophies may arrange at their own cost for their name and the year of their holding to be engraved on the trophy. Lost or damaged trophies will incur a replacement cost.
34. A music selection committee of at least two persons, who shall be accordion players or teachers of note, shall be appointed annually by the New Zealand Accordion Association

Committee, and shall determine the test music to be played at any competition.

35. Submission of an entry form shall be deemed as full and complete acceptance and understanding of these competition rules.
36. These competition rules shall only be altered, added to or rescinded by resolution at the annual general meeting or at any special meeting called for the purpose, provided that notice of any such alterations, addition or rescission shall have been circulated to members at least twenty-one (21) days prior to such meeting. Any proposed alteration, addition, or rescission of the rules may be amended at the meeting. A two-thirds majority of those present and entitled to vote shall be necessary to carry the motion.
37. These rules and regulations known as the New Zealand Accordion Association Incorporated Competition Rules, shall be placed as an appendix to the Constitution and be part of that document.

ADJUDICATING

1. The names of the adjudicators will be printed in the Official Programme and they include New Zealand accordionists, plus invited overseas guests.
2. Allocation of Adjudicators to classes is at the discretion of the Adjudicators Co-ordinator, with due regard paid to the type of class, experience, style, other instrument(s), vocals, etc. With particular note given that:
Adjudicators will be asked if there may be some reason why they are ineligible to adjudicate any of the competitors. As per Coupe Mondiale practice, reasons may include, but are not limited to:
 - teacher/student relationship within the previous two years,
 - close personal or professional relationship,
 - Family Members
3. All classes, including all South Pacific and New Zealand Championship classes, are sight-judged.
4. Two sets of judges operate at the same time to alternate classes. This acts as a time saving measure to reduce the period between each competitor and also to increase the interest for the audience who will not have to listen to several performances in a row of the same piece.

Assessment Criteria

1. ASSESSMENT CRITERIA:
Classes C6/SP250, C9/SP251, C11/SP257, C12/SP259, C15/SP258, C16/SP252, C53/SP260 and will all be assessed as follows:

Performance	80 marks
Program	10 marks
Stagecraft / Presentation	10 marks

All other classes are to be assessed as follows:

Performance, Program (where applicable) and Stagecraft / Presentation 100 marks

2. DEFINITIONS:

“Performance” refers to the overall musicianship of the performance, including technical proficiency and performance by memory.

“Program” refers to the degree of difficulty of the selected pieces where applicable consisting of different styles, character and composers.

“Stagecraft / Presentation” means the competitors ability to present himself/herself to an audience as an artist. It includes but is not limited to:

- Introduction
- Dress
- Audience Interaction

Marking

1. The adjudicators are required to observe a consistent standard of adjudication. Each performance will be marked utilizing the following guidelines:

90 to 100	Excellent
80 to 90	Very Good
70 to 80	Good
60 to 70	Fair
50 to 60	Very poor

2. Awarding of placing:

- a. For a placing below an equal placing the next placing is not awarded, e.g. if a first equal placing is awarded then 2nd place is not awarded etc.
- b. As stated in Rule 30: “The adjudicators may award other than first place, if, in their opinion, first place is not warranted”.

Calculation of Results

1. The calculation of the results from the adjudicator’s mark sheets shall be carried out at the Results Calculation Table. If more than one adjudicator, then the marks are to be averaged.
2. The Results Calculation Table personnel shall then calculate and apply any time penalty marks for any failure to follow the maximum or minimum playing time for specified classes.

The Classes for which time penalties may be applied are: C6/SP250, C9/SP251, C11/SP257, C12/SP259, C15/SP258, C16/SP252, C53/SP260

Time penalties are to be calculated as follows:

- a. Timing will be the responsibility of a timekeeper appointed independently of the adjudicators.
- b. Penalty points will be calculated as per the Coupe Mondiale rules.

MUSIC ORDER FORMS



Please see www.accordion.co.nz/2020/2020submitforms.htm for online order forms.

Please pay via internet banking to:

Bank: Bank of New Zealand | Account Name: N Z Accordion Association |
Account Number: 02-0272-0374890-000

Alternatively if you don't have access to the internet, please complete the details below:

Personal Details

First Name: _____ Surname: _____

Street Address: _____

City: _____ Postcode: _____

Date of Birth: _____ Phone Number: _____
(please provide if under 21 years)

Email: _____ Mobile Number: _____

Please send the following competition test music:

Class	Music	Price
Total amount enclosed		\$

To pay by cheque to the NZAA mail to the Competition Secretary :
Renee Jeffries 19b Brixton Road, Little Manly, Whangaparaoa 0930.

I require

- Own choice class entry forms (for all classes without test music, except orchestras)
- Orchestra class entry forms

Please email or post

Note: Entry forms for classes with a test piece requirement are supplied when the test music is ordered.